



Cyactiv® Joint

Healthy joints are essential for comfortable and effortless movement. They constitute the master piece of body mobility. A nutritional support can be helpful to protect, maintain, and repair joint function. **Cyactiv® Joint** is a natural and innovative solution composed of clinically proven and standardized extracts. **Cyactiv Joint** is specifically formulated to support joint comfort and a healthy physical activity.

INGREDIENTS

FEATURES	BENEFITS
Cyactiv® Spirulina Extract (<i>Arthrospira platensis</i>)	Cyactiv is a patented extract of spirulina containing a high concentration of phycocyanin (>30%). Cyactiv is 4 times more concentrated in phycocyanin than standard spirulina. The extraction step is carried out only with water, without the use of solvents. Its low-temperature drying process preserves the quality of active compounds. Spirulina has antioxidant and immunostimulant properties, supporting your vitality. Cyactiv has been extensively studied in several clinical studies.
NEM® Eggshell Membrane	Eggshell membrane is composed of fibrous proteins for example type I collagen, hyaluronic acid and glycosaminoglycans (GAG), such as chondroitin. They enter in the composition of joint extracellular matrix and are considered as the building blocks of joint. This clinically tested extract is standardized in collagen and in GAG.
Boswellin® PS Boswellia serrata Extract (resin)	Boswellia serrata resin is widely used in Ayurvedic medicine. This part is notably rich in terpenoids. The extract is standardized to 35-50% of boswellic acids. The presence of polysaccharides increase the solubility and bioavailability of active compounds. Boswellia serrata supports joint and muscle comfort and can be helpful to enhance effort on muscle and joints.
CherryPURE® Tart Cherry Extract	Tart cherry is rich in flavonoids and phenolic acids that have antioxidant activity to help reducing oxidative stress. The ingredient selected is clinically tested and standardized to 2% of proanthocyanidins.

INGREDIENTS AND LABEL

Cyactiv® Joint is a natural and innovative blend of clinically proven, standardized extracts specifically formulated to support and nourish healthy joints.*

Healthy joints are essential for comfortable and effortless movement and proven nutritional ingredients are crucial to help protect and support joint health and maintain proper mobility, flexibility and function.*

Cyactiv Joint provides essential nourishment to increase joint comfort and healthy physical activity for improved quality of life.*

- Helps Support cartilage and connective tissue elasticity and strength*
- Helps improve flexibility and healthy joint function*
- Helps decrease muscle soreness and muscle fatigue to support increased movement*

CAUTION: Use only as directed. Do not take this product if you are pregnant or nursing. Consult a healthcare professional before use if you have existing medical conditions.

Not intended for children. Store in a cool dry place.

*These statements have not been evaluated by the Food and Drug Administration. This product is not intended to diagnose, treat, cure or prevent any disease.

Cyactiv® Joint



Joint Support*

- ✓ Mobility
- ✓ Flexibility
- ✓ Function

120 CAPSULES
DIETARY SUPPLEMENT

Suggested Use: Take 2 capsules 2 times daily with food.

Supplement Facts

Serving Size: 4 capsules
Servings per container: 30

Amount Per Serving

Cyactiv® - Spirulina Extract	500mg†
NEM® - Eggshell Membrane	500mg†
CherryPURE® - Tart Cherry Extract	480mg†
Boswellin® PS - Boswellia serrata Extract	400mg†

† Daily value not established

Other ingredients: Hypromellose (Vegetable Capsule), Organic Rice Concentrate.

Product does not contain: Dairy, wheat, gluten, peanuts, soy or corn allergens. No artificial flavors or colors.

CONTAINS: Egg-derived product.

Distributed by: Cerule International, LLC
18565 Jamboree Rd, Suite 520
Irvine, CA 92612 USA
949-220-2622 | www.cerule.com

Product of the USA
Rev: NOV2021
US Patent 9,370,537

NEM® is a trademark of ESM Technologies, LLC and is registered in the United States and other countries.

CherryPURE® is a registered trademark of Shoreline Fruit, LLC.

Boswellin® PS is a registered trademark of Sabinsa Corporation.



FAQ'S

What is the function of Cyactiv Joint?

Specifically designed with natural ingredients standardized in active molecules, **Cyactiv Joint** is a supplement that supports joint comfort and physical activity.

Can Cyactiv Joint be consumed with other Cerule products and other supplements?

Yes, the **Cerule**® products can be consumed together and were designed to enhance the beneficial effects of each other. We know of no known interaction between **Cerule** products and other nutritional supplements.

SUGGESTED USAGE

Recommended daily dose : 2 capsules, 2 times per day, with a glass of water, during meals. Do not refrigerate.

ADDITIONAL INFORMATION

Does not contain wheat, nuts, soy, corn artificial aromas, preservatives or coloring agents. Capsule exclusively composed of ingredient of vegetal origin.

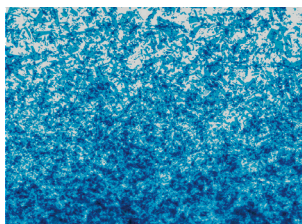
Contains egg derived product.

Pregnancy and nursing are considered special conditions. We recommend that your attending doctor(s) be made aware of any and all supplements consumed during this time. At this time, we do not advise **Cyactiv Joint** consumption during pregnancy.

If you have any health condition and/or are using any medication then consult your attending health care provider before consuming any nutritional supplements.

CYACTIV JOINT. NATURAL AND INNOVATIVE FORMULA SUPPORTING JOINT COMFORT, COMPOSED OF CLINICALLY TESTED INGREDIENT

Spirulina Extract



Eggshell Membrane



Tart Cherry Extract



Boswellia serrata Extract



REFERENCES

Spirulina extract

Jensen G., Attridge V., Beaman J., Guthrie J., Ehmann A., Benson K., 2015, Antioxidant and anti-inflammatory properties of an aqueous cyanophyta extract derived from *Arthrospira platensis*: contribution to bioactivities by the non-phycoerythrin aqueous fraction, *Journal of Medicinal Food*, 18(5):535-541.

Jensen G., Attridge V., Carter S., Guthrie J., Ehmann A., Benson K., 2016, Consumption of an aqueous cyanophyta extract derived from *Arthrospira platensis* is associated with reduction of chronic pain: results from two human clinical pilot studies, *Nutrition and Dietary Supplements*, 8:65-70.

Jensen G., Drapeau C., Lenninger M., Benson K., 2016, Clinical Safety of a High Dose of Phycocyanin-Enriched Aqueous Extract from *Arthrospira platensis*: Results from a Randomized, Double-Blind, Placebo-Controlled Study with a Focus on Anticoagulant Activity and Platelet Activation, *Journal of Medicinal Food*, 19(7): 1-9.

Eggshell membrane

Benson K., Ruff K., Jensen G., 2012, Cultures of Peripheral Blood Mononuclear Cells: Increased Suppression of Tumor Necrosis Factor- α Levels After In Vitro Digestion, *J Med Food* 15 (4) 2012, 360–368

Ruff K., DeVore D., Leu M., Robinson M., 2009, Eggshell membrane: A possible new natural therapeutic for joint and connective tissue disorders. Results from two open-label human clinical studies, *Clinical Interventions in Aging* 2009;4 235–240.

Danesch U., Seybold M., et al., 2014, NEM® Brand Eggshell Membrane Effective in the Treatment of Pain Associated with Knee and Hip Osteoarthritis: Results from a Six Center, Open Label German Clinical Study, *J Arthritis*, 3(3):1-5.

Ruff K., Winkler A., Jackson R. et al., 2009, Eggshell membrane in the treatment of pain and stiffness from osteoarthritis of the knee: a randomized, multicenter, double-blind, placebo-controlled clinical study, *Clin Rheumatol*, 28:907–914.

Tart Cherry powder

Connolly D., McHugh M., Padilla-Zakour O., 2006, Efficacy of a tart cherry juice blend in preventing the symptoms of muscle damage, *Br J Sports Med* 2006;40:679–683.

Levers K., Dalton R., Galvan E., O'Connor A., et al., 2016, Effects of powdered Montmorency tart cherry supplementation on acute endurance exercise performance in aerobically trained individuals, *Journal of the International Society of Sports Nutrition*, 13:22

Boswellia serrata extract

Kimmatkar N., Thawani V., Hingorani L., Khiyani R., 2003, Efficacy and tolerability of Boswellia serrata extract in treatment of osteoarthritis of knee--a randomized double blind placebo controlled trial, *Phytomedicine*, 10(1):3-7

Prabhavathi K., Chandra U., Soanker R., Rani P., 2014, A randomized, double blind, placebo controlled, cross over study to evaluate the analgesic activity of Boswellia serrata in healthy volunteers using mechanical pain model, *Indian J. Pharmacol*, 46(5):475-479.

Umar S., Umar K., Sarwar A., et al., 2014, Boswellia serrata extract attenuates inflammatory mediators and oxidative stress in collagen induced arthritis, *Phytomedicine*, 21(6):847-56. <https://www.ncbi.nlm.nih.gov/pubmed/24667331>

FOR MORE INFORMATION

www.cerule.com
www.facebook.com/ceruleglobal
www.youtube.com/cerule
<https://www.facebook.com/cerulenzau>

Cerule Caring Crew will answer all your questions by phone or email:
 NZ 0800 CERULE (237853) CaringCrewNZ@cerule.com
 AU 1800 CERULE (237853) CaringCrewAU@cerule.com